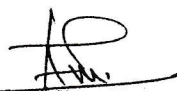


253

Name of Work : RAJE MALHAR HOLKAR AGRO PRODUCER COMPANY LTD BERLI TQ.MUKHED Estimate prepared for Construction of Shed For Daal Mill Plant At- BERLI BK GUT.NO 137 TQ.MUKHED Dist.Nanded

RECAPITULATION SHEET

(A) COST OF Civil WORK	Rs.	1980165
(B) Add Royalty	Rs.	26139
(C) Add 12% GST	Rs.	356430
(D) Add 1% Insurance	Rs.	19802
(E) Add Contigencies		69465
TOTAL	Rs.	2452000


K.V. AMRUTWAD
B.E. (Civil)
CONSULTING ENGINEER
R.No.TP/NWCMC/ENGG/44

254

Name of Work : RAJE MALHAR HOLKAR AGRO PRODUCER COMPANY LTD BERLI TQ.MUKHED
Estimate prepared for Construction of Shed For Daal Mill Plant At- BERLI BK GUT.NO 137
TQ:MUKHED Dist.Nanded

ABSTRACT SHEET					
Sr. No.	Item Description	Quantity	Rate	Unit	Amount
1	Excavation for foundation in earth, soils of all types, sand gravel and soft murum, including the removing the excavate material up to a distance of 50 meter beyond the building area preparing the bed for the foundation and necessary back filling ramming watering (including shoring and strutting etc complete life up to 1.50metre).(Item No. 21.02 BDA 1 ; Page.No.197)	9.07	207.00	Cum	1877.90
2	Excavation for foundation in hard murum including removing the excavated material ---etc. complete (Item No.21.06 BDA 2 Page.No.197)	24.19	227.00	Cum	5491.58
3	Filling in plinth and floors with contractors soil ,sand or murum in 15cm to20cm (Item No.21.37 BDA 11 Page.No.201)	83.60	599.00	Cum	50075.81
4	Providing and laying in situ cement concrete in 1:3:6 of trap/ granite /quartzite /gneiss metal for foundation and bedding --- etc. complete. (Item No.24.01 BDE 1B Page.No.226)	3.02	5592.44	Cum	16911.53
5	Providing and laying in situ. Cement concrete M-15/1:2:4 of trap/granite/quartzite/gneiss metal for foundation and bedding including bailing out water manually , formwork, compacting, curing etc. complete. Bd.E.1 Page No.287 (L.no.24.16, p.no.229)	18.58	6127.37	Cum	113831.59
6	Providing and laying insitu c.c. M-20 of trap/ for footing .etc.complete.(Item No.25.11 BDF 3 Page.No.230)	4.31	6877.12	Cum	29634.88
7	Providing and casting in situ cement concrete M-20 of trap/ geanite /quartzite gneiss metal for reinforced -cement concrete columns - etc. complete. (Item No.25.31,BDF 5 Page.No.232)				
	Ground floor --	6.47	13556.12	Cum	87696.15
8	Providing and casting in situ cement concrete M- 20 of trap/ quartzite/ gneiss metal for reinforced cement concrete beams and lintelsetc complete. (Excluding reinforcement)(8.50 bag/cum)(Item No.25.50 BDF 6A Page.No.234)				
	Ground floor --	3.90	12042.12	Cum	46962.81
9	Providing and laying Cast in situ/Ready Mix cement concrete M-20 of trap/ granite / quartzite/ gneiss metal for R.C.C. slabs and landings as per detailed designs and drawings including steel centering, formwork, cover blocks, laying/pumping, compaction finishing the formed surfaces with cement mortar 1:3 of sufficient minimum thickness to give a smooth and even surface or roughening if special finish is to be provided and curing etc. complete.(Excluding reinforcement and structural steel).with fully automatic micro processor based PLC with SCADA enabled reversible Drum Type mixer/ concrete Batch mix plant (Pan mixer) etc. complete. With fine aggregate (Natural Sand / Crushed sand VSI Grade finely washed etc)(Item No.25.70 BDF 8 Page.No.236)	0.83	13705.12	Cum	11347.84
10	Providing and laying Cast in situ/Ready Mixcement concrete M-20 of trap/ granite/ quartzite/ gneiss metal for R.C.C. chajja as per detailed design and drawings including steel centering, formwork, cover blocks, laying/pumping, compacting and roughening the surface if special finish is to be provided and curing complete. (Excluding reinforcement and structural steel). with fully automatic micro processor based PLC with SCADA enabled reversible Drum Type mixer/ concrete Batch mix plant (Pan mixer) etc. complete. With fine aggregate (Natural Sand / Crushed sand VSI Grade finely washed etc)(Item No.26.05 BDF 9 Page.No.239)	1.28	13705.12	cum	17515.14

Sr. No.	Item Description	Quantity	Rate	Unit	Amount
12	Providing masonry with conventional/ Indian standard type bricks in c.m. 1:6 in foundation and plinth -etc. complete. (Item No.27.03 BDG 1 Page.No.254)				
	Ground floor --	6.56	7438.04	Cum	48802.90
13	Providing second class Burnt Brick masonry with conventional/ I.S. type bricks in cement mortar 1:6 in superstructure including striking joints, raking out joints, watering and scaffolding etc. Complete (Item No 27.05 BDG 1 Page No 254)				
	Ground floor --	25.31	7918.04	Cum	200399.30
14	Providing sand faced plaster externally in cement mortar using approved screened sand, in all positions including base coat of 15 mm thick in cement mortar 1:4 using waterproofing compound at 1 kg per cement bag curing the same for not less than 2 days and keeping the surface of the base coat rough to receive the sand faced treatment 6 to 8 mm thick in cement mortar 1:4 finishing the surface by taking out grains and curing for fourteen days scaffolding etc.complete.(Item No.32.11 BDG				
	Ground floor --	186.23	638.97	Sqm	118997.97
15	Providing internal cement plaster 12 mm. thick in single coat in cement mortar 1:5 without neeru finish to concrete or brick surfaces etc.complete. (Item No.32.03 BDL 2 Page.No.268)				
	Ground floor --	161.84	270.97	Sqm	43853.00
16	Providing and fixing rolling shutter fabricated from steel laths of minimum thickness 0.9 mm with lock plate of 3.15 mm thickness reinforced with 35 x 35 x 5 mm angle section fitted with sliding bolts and handles for both sides, deep M.S. channel section of depth and thickness not less than 65 mm and 3.15 mm respectively with hold fast arrangements, M.S. Bracket plate 300 x 300 x 3.15 mm minimum size and shape with square bar, suspension shaft of minimum 32 mm diameter, hood cover of M.S. sheet not less than 0.9 mm thickness and of any size at top and safety devices including mechanical gear operation arrangement consisting of worm gear wheels and worms of high grade cast iron or mild steel and one coat of red lead primer etc. complete. (I.S. 62481979) (Without mechanical gear)(Item No.39.24 BDT Page.No.318)				
	Ground floor --	9.00	66.97	Sqm	602.73
17	Providing and fixing mild steel grill work for windows, ventilators etc. 20 kg/sqm as per drawing including fixtures, necessary welding and painting with one coats of anticorrosive paint and				
	Ground floor --	18.72	2097.00	Sqm	39255.84
18	Providing and fixing in position. (as per I.S.1868 / 1982) Aluminium sliding window of two tracks with rectangular pipe having overall dimension 63.50 x 38.10 x 1.02 mm at weight 0.547 kg/Rmt. and window frame bottom track section 61.85 x 31.75 x 1.20 mm at weight 0.695 kg/Rmt. Top and side track section 61.85 x 31.75 x 1.30 mm at weight 0.659 kg/Rmt. The shutter should be of bearing bottom 40 x 18 x 1.25 mm at weight 0.417 kg/Rmt. Inter locking section 40 x 18 x 1.10 mm at weight 0.469 kg/Rmt. And handle section 40 x 18 x 1.25 mm at weight 0.417 kg/Rmt. and top section 40 x 18 x 1.25 mm at weight 0.417 kg/Rmt. As per detailed drawings and as directed by Engineer in charge with all necessary Aluminium sections fixtures and fastenings such as roller bearing in nylon casting and self locking catch fitted in vertical section of shutter including 5 mm thick plain glass with all required screws and nuts etc, complete. With powder coating with box (Item No 39.39 BDT Page No 322)				
	Ground floor --	18.72	4794.00	Sqm	89743.68
19	Providing and applying three coats of water proof cement paint of approved manufacture and of approved colour to new plastered surfaces including scaffolding if necessary, cleaning and preparing the surface, watering for two days etc. complete. (Item No.35.15 , Page.No.287)				

255

Sr. No.	Item Description	Quantity	Rate	Unit	Amount
	Qty. as per I. No.14	186.23	104.00	Sqm	19368.34
20	Providing and applying washable oil bound distemper of approved colour and shade to old and new two coats, including scaffolding if necessary, cleaning and preparing the surface complete. Complete. (I.no.36.11,,p.no.291) item code- BDP5A-p.no.413				
	Qty. as per I. No.15	161.84	48.00	Sqm	7768.18
21	Providing and fabricating structural steel work in rolled sections, fixed with connecting plates or angle cleats in main and cross beams, hip and jack rafters, purlins connecting to truss members and the like, as per detailed designs and drawing or as directed including cutting, fabricating, hoisting, erecting, fixing in position, making riveted/ bolted/ welded connections and one coat of anticorrosive paint and over it two coats of oil painting complete. Bd.c.3 page No.275, (I.No.23.01,P.no.223)	4.77	101844.00	M.T,	485330.52
22	Providing and fixing plain zinc sheeting of 0.80 mm thick (22 B.W.G.) over the ridge hip or valley to galvanized iron sheet roofing including all fastening and bolt galvanized iron screws and bolts, lead and bitumen washers etc. complete. (Weight of 6.8 kg/sq.m.). (I.No.38.05,P.No.297)	283.46	1139.00	Sqm	322865.04
23	Providing and fixing H.D.P container Syntex or alike one piece moulded water tank made out of low density polythylar and built corrugation including of delivery up to destination hoisting and fixing of accessories such as inlet, outlet overflow of all tanks capacity above 1000 to 20,000 litres	1000.00	13.00	lit	13000.00
24	Providing and fixing on walls/ ceiling/ floor 32mm dia. CPVC pipe with necessary fittings, remaking good the demolished portion etc. complete. Including removing existing pipe line if necessary and conveying and stacking the same in PWD chowky or as directed etc. complete	10.00	584.00	rgm	5840.00
25	Providing and fixing on walls/ ceiling/ floor 25 mm dia. CPVC pipe with necessary fittings, remaking good the demolished portion etc. complete. Including removing existing pipe line if necessary and conveying and stacking the same in PWD chowky or as directed etc. complete	10.00	262.00	rgm	2620.00
Total Rs.					1980165.36
					Total 1980165.36
					Say 1980165


K.V. AMRUTWAD
 B.E. (Civil)
 CONSULTING ENGINEER
 R.No.TP/NWCMC/ENGG/44

258

Sr. No.	Item Description	Nos	Length (M)	Breadth (M)	Height/ Dept. (M)	Quantity	Units
9	Providing and laying cast in situ ready mix cement concrete M-20 of trap/ granite/ quartzite/ gneiss metal for R.C.C. slabs and landings as per detailed designs and drawings including steel centering, formwork, cover blocks, laying/pumping, compaction finishing the formed surfaces with cement mortar 1:3 of sufficient minimum thickness to give a smooth and even surface or roughening if special finish is to be provided and curing etc. complete. (Excluding reinforcement and structural steel). with fully automatic micro processor based PLC with SCADA enabled reversible Drum Type mixer/ concrete Batch mix plant (Pan mixer) etc. complete. With fine aggregate (Natural Sand / Crushed sand VSI Grade finely washed etc) (Item No.25.70 BDF 8 Page.No.236) G.F.-Shutter Landing -1x1	1	3.60	2.00	0.12	0.83	Cum
					Total qty.	0.83	Cum
10	Providing and laying cast in situ ready Mix cement concrete M-20 of trap/ granite/ quartzite/ gneiss metal for R.C.C. chajja as per detailed design and drawings including steel centering, formwork, cover blocks, laying/pumping, compacting and roughening the surface if special finish is to be provided and curing complete. (Excluding reinforcement and structural steel), with fully automatic micro processor based PLC with SCADA enabled reversible Drum Type mixer/ concrete Batch mix plant (Pan mixer) etc. complete. With fine aggregate (Natural Sand / Crushed sand VSI Grade finely washed etc) (Item No.26.05 BDF 9 Godown Window chajja -- Rolling Shutter Chajja	13 1	1.50 3.60	0.45 2.00	0.08 0.08	0.70 0.58	Cum
					Total qty.	1.28	Cum
11	Providing & fixing in position T.M.T.bar reinforcement of various diameters for reinforced cement concrete pile caps, footing, foundation, slabs, beams, columns, canopies, stair case, newels, chajjas, lintels, pardis, copings, fins, arches -etc. complete. (Item No.26.33 BDF 17A Page No.245) Plinth Slab Footing Column Beam Landing Chajja	1 1 1 1 1 1	18.58 4.31 6.47 3.90 0.83 1.28	50 55.00 90.00 90.00 70.00 60.00	1.00 1.00 1.00 1.00 1.00 1.00	928.88 237.01 582.22 350.99 57.96 76.68	
					Total	2233.73	
					Total	2.23	M.T
12	Providing masonry with conventional/ Indian standard type bricks in c.m. 1:6 in foundation and plinth -etc. complete. (Item No.27.03 BDG 1 Page.No.254) Godown -Plinth beam-- -- 1x2 --1x2	2 2	12.19 15.24	0.23 0.23	0.52 0.52	2.92 3.65	Cum
					Total	6.56	Cum
13	Providing second class Burnt Brick masonry with conventional/ I.S. type bricks in cement mortar 1:6 in superstructure including striking joints, raking out joints, watering and scaffolding etc. Complete. (Item No.27.05 BDG 1 Page.No.254) Godown--- Deduction -- Rolling Shutter - 1x3	8 4 1	2.59 4.24 3.00	0.23 0.23	3.00 3.00 1.00	14.30 11.70 0.69	Cum
					Total	26.00	Cum
					Total qty.	0.69	Cum

259

Sr. No.	Item Description	Nos	Length (M)	Breadth (M)	Height/ Dept. (M)	Quantity	Units
	Net Total Qty.			26.00	0.69	25.31	Sqm
14	Providing sand faced plaster externally in cement mortar using approved screened sand, in all positions including base coat of 15 mm thick in cement mortar 1:4 using waterproofing compound at 1 kg per cement bag curing the same for not less than 2 days and keeping the surface of the base coat rough to receive the sand faced treatment 6 to 8 mm thick in cement mortar 1:4 finishing the surface by taking out grains and curing for fourteen days scaffolding etc.complete.(Item No.32.11 BDG 7 Page.No.269)						
	Outer side-- Godown	2	12.19		3.90	95.08	
		2	15.24		3.90	118.87	
					Total qty.	213.95	Sqm
	Deduction --Godown-- Rolling Shutter- Window	1	3.00		3.00	9.00	
		13	1.20		1.20	18.72	
					Total qty.	27.72	Sqm
	Net Total Qty.			213.95	27.72	186.23	Sqm
15	Providing internal cement plaster 12 mm. thick in single coat in cement mortar 1:5 without neeru finish to concrete or brick surfaces etc.complete. (Item No.32.03 BDL 2 Page.No.268)						
	Inner side-- Godown	2	12.19	2.95		71.92	
		2	15.24	2.95		89.92	
					Total qty.	161.84	
					Net qty.	161.84	sqm
16	Providing and fixing rolling shutter fabricated from steel laths of minimum thickness 0.9 mm with lock plate of 3.15 mm thickness reinforced with 35 x 35 x 5 mm angle section fitted with sliding bolts and handles for both sides, deep M.S. channel section of depth and thickness not less than 65 mm and 3.15 mm respectively with hold fast arrangements, M.S. Bracket plate 300 x 300 x 3.15 mm minimum size and shape with square bar, suspension shaft of minimum 32 mm diameter, hood cover of M.S. sheet not less than 0.9 mm thickness and of any size at top and safety devices including mechanical gear operation arrangement consisting of worm gear wheels and worms of high grade cast iron or mild steel and one coat of red lead primer etc. complete. (I.S. 62481979) (Without mechanical gear)(Item No.39.24 BDT Page.No.318)	1	3		3	9.00	Sqm
17	Providing and fixing mild steel grill work for windows, ventilators etc. 20 kg/sqm as per drawing including fixtures, necessary welding and painting with one coats of anticorrosive paint and two coats of oil painting complete (Item No.40.01 BDU 1 Page.No.338)						
	Grill work	13	1.2		1.2	18.72	
					Total qty.	18.72	Sqm

260

Sr. No.	Item Description	Nos	Length (M)	Breadth (M)	Height/ Dept. (M)	Quantity	Units
18	1982) Aluminium sliding window of two tracks with rectangular pipe having overall dimension 63.50 x 38.10 x 1.02 mm at weight 0.547 kg/Rmt. and window frame bottom track section 61.85 x 31.75 x 1.20 mm at weight 0.695 kg/Rmt. Top and side track section 61.85 x 31.75 x 1.30 mm at weight 0.659 kg/Rmt. The shutter should be of bearing bottom 40 x 18 x 1.25 mm at weight 0.417 kg/Rmt. Inter locking section 40 x 18 x 1.10 mm at weight 0.469 kg/Rmt. And handle section 40 x 18 x 1.25 mm at weight 0.417 kg/Rmt. and top section 40 x 18 x 1.25 mm at weight 0.417 kg/Rmt. As per detailed drawings and as directed by Engineer in charge with all necessary Aluminium sections fixtures and fastenings such as roller bearing in nylon casting and self locking catch fitted in vertical section of shutter including 5 mm thick plain glass with all required screws and nuts etc, Window	13	1.2		1.2	18.72	
					Total qty.	18.72	Sqm
19	providing and applying three coats of water proof cement paint of approved manufacture and of approved colour to new plastered surfaces including scaffolding if necessary, cleaning and preparing the surface, watering for two days etc. complete. (Item No.35.15 , Page.No.287) Qty. as per I. No.14					186.23	Sqm
20	Providing and applying washable oil bound distemper of approved colour and shade to old and new two coats, including scaffolding if necessary, cleaning and preparing the surface complete. Complete (I.no.36.11,,p.no.291) item code- BDp5A- p.no.413 Qty. as per I. No.15					161.84	Sqm
21	providing and fabricating structural steel work in rolled sections, fixed with connecting plates or angle cleats in main and cross beams, hip and jack rafters, purlins connecting to truss members and the like, as per detailed designs and drawing or as directed including cutting, fabricating, hoisting, erecting, fixing in position, making riveted/ bolted/ welded connections and one coat of anticorrosive paint and over it two coats of oil painting complete Rd c 3 name No 275 / square Hallow section post support ---200x200x4 @ 24.40 kg/m	10	3.65		24.40	890.60	
	Square Hallow Section , A.--75x75x4 @ 8.70 kg/m -- 2x5	4	9.17		8.70	319.12	
	-- 50x50x4 @ 5.72 kg/m --2x2x5	4	2.59		5.72	59.26	
	-- 50x50x4 @ 5.72kg/m-- 1x5	4	2.49		5.72	56.97	
	-- 50x50x4 @ 5.72kg/m-- 2x5	4	1.99		5.72	45.53	
	B--50x50x4 @ 5.72 Kg/M-2x5	4	2.77		5.72	63.38	
	--50x50x4 @ 5.72 Kg/M-2x5	4	2.33		5.72	53.31	
	C--50x50x4 @ 5.72 Kg/M-2x5	4	1.49		5.72	34.09	
	--50x50x4 @ 5.72 Kg/M-2x5	4	1.00		5.72	22.88	
	--50x50x4 @ 5.72 Kg/M-2x5	4	0.50		5.72	11.44	
	D--50x50x4 @ 5.72 Kg/M-2x5	4	1.99		5.72	45.53	
	--50x50x4 @ 5.72 Kg/M-2x5	4	1.57		5.72	35.92	
	Purlin- 50x50x4 @ 5.72 Kg/M- 2x5	4	15.24		5.72	348.69	
	Tie Leval Runner-50x50x6 @ 4.50Kg/M-1x3	4	15.24		4.50	274.32	
	Base Plate- 350x350x10mm th.	10	0.35	0.35	78.50	96.16	
	Gusset Plate-250x250x 8 mm th.	10	0.25	0.25	62.80	39.25	
	3x2x5	15	0.45	0.45	62.80	190.76	

262

Name of Work : RAJE MALHAR HOLKAR AGRO PRODUCER COMPANY LTD BERLI
TQ.MUKHED Estimate prepared for Construction of Shed For Daal Mill Plant At- BERLI BK
GUT.NO 137 TQ.MUKHED Dist.Nanded

RATE ANALYSIS

Sr. No.	Item Description	Per unit Quantiy	Lead charges Rs.per unit	Total Amount in Rs.	Units
1	Excavation for foundation in earth, soils of all types, sand gravel and soft murum, including the removing the excavate material up to a distance of 50 meter beyond the building area preparing the bed for the foundation and necessary back filling ramming watering (including shoring and strutting etc complete life up to 1.50metre).(Item No. 21.02 BDA 1 ; Page.No.197)				
	A)Ground Floor-Rate as per SSR 2022-2023			207.00	
	Total			207.00	Cum
2	Excavation for foundation in hard murum including removing the excavated material ---etc. complete (Item No.21.06 BDA 2 Page.No.197)				
	A)Ground Floor-Rate as per SSR 2022-2023			227.00	
	Total			227.00	Cum
3	Filling in plinth and floors with contractors soil ,sand or murum in 15cm to20cm (Item No.21.37 BDA 11 Page.No.201)				
	A)Ground Floor-Rate as per SSR 2022-2023			599.00	
	i) Murum	1.00	0.00	0.00	
	Total			599.00	Cum
4	Providing and laying in situ cement concrete in 1:3:6 of trap/ granite /quartzite /gneiss metal for foundation and bedding --- etc. complete. (Item No.24.01 BDE 1B Page.No.226)				
	A)Ground Floor-Rate as per SSR 2022-2023			5830.00	
	Deduct 126 rupees For Scada			126.00	
			Total	5704.00	
	B)Deduct Royalty charges of sand	0.47	237.37	111.56	
	C) Sub Total		C=A-B	5592.44	
	D) Add Lead Charges			0.00	
	i) Metal	0.94	0.00	0.00	
	ii) Sand	0.47	0.00	0.00	
	iii) Cement	4.40	0.00	0.00	
	Total			5592.44	Cum
5	Providing and laying in situ. Cement concrete M-15/1:2:4 of trap/granite/quartzite/gneiss metal for foundation and bedding including bailing out water manually , formwork, compacting, curing etc. complete. Bd.E.1 Page No.287 (I.no.24.16, p.no.229)				
	A)Ground Floor-Rate as per SSR 2022-2023			6359.00	
	Deduct 126 rupees For Scada			126.00	
			Total	6233.00	
	B)Deduct Royalty charges of sand	0.445	237.37	105.63	
	C) Sub Total		C=A-B	6127.37	
	D) Add Lead Charges			0.00	
	i) Metal	0.92	0.00	0.00	

263

Sr. No.	Item Description	Per unit Qty	Lead charges Rs. per unit	Total Amount in Rs.	Units
	Total			6127.37	Cum
6	Providing and laying insitu c.c. M-20 of trap/ for footing ..etc.complete.(Item No.25.11 BDF 3 Page.No.230)			7104.00	
	A)Ground Floor-Rate as per SSR 2022-2023			126.00	
	Deduct 126 rupees For Scada			126.00	
			Total	6978.00	
	B)Deduct Royalty charges of sand	0.425	237.37	100.88	
	C) Sub Total		C=A-B	6877.12	
	D) Add Lead Charges			0.00	
	i) Metal	0.85	0.00	0.00	
	ii) Sand	0.43	0.00	0.00	
	iii) Cement	7.00	0.00	0.00	
	Total			6877.12	Cum
7	Providing and casting in situ cement concrete M-20 of trap/ geanite /quartzite gneiss metal for reinforced - cement concrete columns - etc. complete. (Item No.25.31,BDF 5 Page.No.232)			13783.00	
	A)Ground Floor-Rate as per SSR 2022-2023			126.00	
	Deduct 126 rupees For Scada			126.00	
			Total	13657.00	
	B)Deduct Royalty charges of sand	0.425	237.37	100.88	
	C) Sub Total		C=A-BC	13556.12	
	D) Add Lead Charges			0.00	
	i) Metal	0.85	0.00	0.00	
	ii) Sand	0.43	0.00	0.00	
	iii) Cement	7.00	0.00	0.00	
	Total			13556.12	Cum
8	Providing and casting in situ cement concrete M- 20 of trap/ quartzite/ gneiss metal for reinforced cement concrete beams and lintelsetc complete. (Excluding reinforcement)(8.50 bag/cum)(Item No.25.50 BDF 6A Page.No.234)			12269.00	
	A)Ground Floor-Rate as per SSR 2022-2023			126.00	
	Deduct 126 rupees For Scada			126.00	
			Total	12143.00	
	B)Deduct Royalty charges of sand	0.425	237.37	100.88	
	C) Sub Total		C=A-B	12042.12	
	D) Add Lead Charges			0.00	
	i) Metal	0.85	0.00	0.00	
	ii) Sand	0.43	0.00	0.00	
	iii) Cement	7.00	0.00	0.00	
	Total			12042.12	Cum

264

Sr. No.	Item Description	Per unit Quantiy	Lead charges Rs.per unit	Total Amount in Rs.	Units
9	Providing and laying Cast in situ/Ready Mix cement concrete M-20 of trap/ granite / quartzite/ gneiss metal for R.C.C. slabs and landings as per detailed designs and drawings including steel centering, formwork, cover blocks, laying/pumping, compaction finishing the formed surfaces with cement mortar 1:3 of sufficient minimum thickness to give a smooth and even surface or roughening if special finish is to be provided and curing etc. complete,(Excluding reinforcement and structural steel).with fully automatic micro processor based PLC with SCADA enabled reversible Drum Type mixer/ concrete Batch mix plant (Pan mixer) etc. complete. With fine aggregate (Natural Sand / Crushed sand VSI Grade finely washed etc)(Item No.25.70 BDF 8 Page.No.236)			13932.00	
	A)Ground Floor-Rate as per SSR 2022-2023			126.00	
	Deduct 126 rupees For Scada				
			Total	13806.00	
	B)Deduct Royalty charges of sand	0.425	237.37	100.88	
	C) Sub Total		C=A-B	13705.12	
	D) Add Lead Charges			0.00	
	i) Metal	0.85	0.00	0.00	
	ii) Sand	0.43	0.00	0.00	
	iii) Cement	7.00	0.00	0.00	
	Total			13705.12	Cum
10	Providing and laying Cast in situ/Ready Mixcement concrete M-20 of trap/ granite/ quartzite/ gneiss metal for R.C.C. chajja as per detailed design and drawings including steel centering, formwork, cover blocks, laying/pumping, compacting and roughening the surface if special finish is to be provided and curing complete. (Excluding reinforcement and structural steel). with fully automatic micro processor based PLC with SCADA enabled reversible Drum Type mixer/ concrete Batch mix plant (Pan mixer) etc. complete. With fine aggregate (Natural Sand / Crushed sand VSI Grade finely washed etc)(Item No.26.05 BDF 9 Page.No.239)			13932.00	
	A)Ground Floor-Rate as per SSR 2022-2023			126.00	
	Deduct 126 rupees For Scada				
			Total	13806.00	
	B)Deduct Royalty charges of sand	0.425	237.37	100.88	
	C) Sub Total		C=A-B	13705.12	
	D) Add Lead Charges			0.00	
	i) Metal	0.85	0.00	0.00	
	ii) Sand	0.43	0.00	0.00	
	iii) Cement	7.00	0.00	0.00	
	Total			13705.12	Cum
11	Providing & fixing in position T.M.T.bar reinforcement of various diameters for reinforced cement concrete pile caps, footing, foundation, slabs, beams, columns, canopies, stair case, newels, chajjas, lintels, pardis, copings, fins, arches -etc. complete ,(Item No.26.33, BDF 17A Page.No.245)			89703.00	
	A)Ground Floor-Rate as per SSR 2022-2023			0.00	
	B) Add Lead Charges				

265

Sr. No.	Item Description	Per unit Quantiy	Lead charges Rs.per unit	Total Amount in Rs.	Units
	i) Steel	1.00	0.00	0.00	
	Total			89703.00	M.T.
12	Providing masonry with conventional/ Indian standard type bricks in c.m. 1:6 in foundation and plinth -etc. complete. (Item No.27.03 BDG 1 Page.No.254)			7514.00	
	A)Ground Floor-Rate as per SSR 2022-2023	0.32	237.37	75.96	
	B)Deduct Royalty charges of sand		C=A-B	7438.04	
	C) Sub Total			0.00	
	D) Add Lead Charges			0.00	
	i) Brick	1.00	0.00	0.00	
	ii) Sand	0.32	0.00	0.00	
	iii) Cement	1.58	0.00	0.00	
	Total			7438.04	Cum
13	Providing second class Burnt Brick masonry with conventional/ I.S. type bricks in cement mortar 1:6 in superstructure including striking joints, raking out joints, watering and scaffolding etc. Complete.(Item No.27.05 BDG 1 Page.No.254)			7994.00	
	A)Ground Floor-Rate as per SSR 2022-2023	0.32	237.37	75.96	
	B)Deduct Royalty charges of sand		C=A-B	7918.04	
	C) Sub Total			0.00	
	D) Add Lead Charges			0.00	
	i) Brick	1.00	0.00	0.00	
	ii) Sand	0.32	0.00	0.00	
	iii) Cement	1.58	0.00	0.00	
	Total			7918.04	Cum
14	Providing sand faced plaster externally in cement mortar using approved screened sand, in all positions including base coat of 15 mm thick in cement mortar 1:4 using waterproofing compound at 1 kg per cement bag curing the same for not less than 2 days and keeping the surface of the base coat rough to receive the sand faced treatment 6 to 8 mm thick in cement mortar 1:4 finishing the surface by taking out grains and curing for fourteen days scaffolding etc.complete.(Item No.32.11 BDG 7 Page.No.269)			639.00	
	A)Ground Floor-Rate as per SSR 2022-2023	0.015	237.37	3.56	
	B)Deduct Royalty charges of sand		C=A-B	635.44	
	C) Sub Total			0.00	
	D) Add Lead Charges			0.00	
	i) Sand	0.02	235.38	3.53	
	ii) Cement	0.11	0.00	0.00	
	Total			638.97	Sqm
15	Providing internal cement plaster 12 mm. thick in single coat in cement mortar 1:5 without neeru finish to concrete or brick surfaces etc.complete. (Item No.32.03 BDL 2 Page.No.268)			271.00	
	A)Ground Floor-Rate as per SSR 2022-2023	0.015	237.37	3.56	
	B)Deduct Royalty charges of sand		C=A-B	267.44	
	C) Sub Total			0.00	
	D) Add Lead Charges			0.00	
	i) Sand	0.02	235.38	3.53	
	ii) Cement	0.11	0.00	0.00	
	Total			270.97	Sqm

266

Sr. No.	Item Description	Per unit Quantiy	Lead charges Rs.per unit	Total Amount in Rs.	Units
16	Providing and fixing rolling shutter fabricated from steel laths of minimum thickness 0.9 mm with lock plate of 3.15 mm thickness reinforced with 35 x 35 x 5 mm angle section fitted with sliding bolts and handles for both sides, deep M.S. channel section of depth and thickness not less than 65 mm and 3.15 mm respectively with hold fast arrangements, M.S. Bracket plate 300 x 300 x 3.15 mm minimum size and shape with square bar, suspension shaft of minimum 32 mm diameter, hood cover of M.S. sheet not less than 0.9 mm thickness and of any size at top and safety devices including mechanical gear operation arrangement consisting of worm gear wheels and worms of high grade cast iron or mild steel and one coat of red lead primer etc. complete. (I.S. 62481979) (Without mechanical gear)(Item No.39.24 BDT Page.No.318)				
	A)Ground Floor-Rate as per SSR 2022-2023			67.00	
	B)Deduct Royalty charges of sand	0.015	237.37	3.56	
	C) Sub Total		C=A-B	63.44	
	D) Add Lead Charges			0.00	
	i) Sand	0.02	235.38	3.53	
	ii) Cement	0.11	0.00	0.00	
	Total			66.97	Sqm
17	Providing and fixing mild steel grill work for windows, ventilators etc. 20 kg/sqm as per drawing including fixtures, necessary welding and painting with one coats of anticorrosive paint and two coats of oil painting complete (Item No.40.01 BDU 1 Page.No.338)				
	A)Ground Floor-Rate as per SSR 2022-2023			2097.00	
	Total			2097.00	Sqm
18	Providing and fixing in position. (as per I.S.1868 / 1982) Aluminium sliding window of two tracks with rectangular pipe having overall dimension 63.50 x 38.10 x 1.02 mm at weight 0.547 kg/Rmt. and window frame bottom track section 61.85 x 31.75 x 1.20 mm at weight 0.695 kg/Rmt. Top and side track section 61.85 x 31.75 x 1.30 mm at weight 0.659 kg/Rmt. The shutter should be of bearing bottom 40 x 18 x 1.25 mm at weight 0.417 kg/Rmt. Inter locking section 40 x 18 x 1.10 mm at weight 0.469 kg/Rmt. And handle section 40 x 18 x 1.25 mm at weight 0.417 kg/Rmt. and top section 40 x 18 x 1.25 mm at weight 0.417 kg/Rmt. As per detailed drawings and as directed by Engineer in charge with all necessary Aluminium sections fixtures and fastenings such as roller bearing in nylon casting and self locking catch fitted in vertical section of shutter including 5 mm thick plain glass with all required screws and nuts etc, complete. With powder coating with box (Item No.39.39 BDT Page No 322)				
	A)Ground Floor-Rate as per SSR 2022-2023			4794.00	
	Total			4794.00	Sqm
19	Providing and applying three coats of water proof cement paint of approved manufacture and of approved colour to new plastered surfaces including scaffolding if necessary, cleaning and preparing the surface, watering for two days etc. complete. (Item No.35.15 , Page.No.287)				
	A)Ground Floor-Rate as per SSR 2022-2023			104.00	
	Total			104.00	Sqm

Sr. No.	Item Description	Per unit Quantiy	Lead charges Rs.per unit	Total Amount in Rs.	Units
20	Providing and applying washable oil bound distemper of approved colour and shade to old and new two coats, including scaffolding if necessary, cleaning and preparing the surface complete. Complete (I.No.36.11,,p.no.291) item code- BDP5A-p.no.413 A)Ground Floor-Rate as per SSR 2022-2023			48.00	
	Total			48.00	Sqm
21	Providing and fabricating structural steel work in roneed sections, fixed with connecting plates or angle cleats in main and cross beams, hip and jack rafters, purlins connecting to truss members and the like, as per detailed designs and drawing or as directed including cutting, fabricating, hoisting, erecting, fixing in position, making riveted/ bolted/ welded connections and one coat of anticorrosive paint and over it two coats of oil paintig complete. Bd.c.3 page No.275,(I.No.23.01,P.no.223) A)Ground Floor-Rate as per SSR 2022-2023			101844.00	
	Total			101844.00	Sqm
22	Providing and fixing plain zinc sheeting of 0.80 mm thick (22 B.W.G.) over the ridge hip or valley to galvanized iron sheet roofing including all fastening and bolt galvanized iron screws and bolts, lead and bitumen washers etc. complete.(Weight of 6.8 kg/sq.m.). (I.No.38.05,P.No.297) A)Ground Floor-Rate as per SSR 2022-2023			1139.00	
	Total			1139.00	Sqm
23	Providing and fixing H.D.P container Syntex or alike one piece moulded water tank made out of low density polythylar and built corrugation including of delivery up to destination hoisting and fixing of accessories such as inlet, outlet overflow of all tanks capacity above 1000 to 20,000 litres A)Ground Floor-Rate as per SSR 2022-2023			13.00	
	Total			13.00	lit
24	Providing and fixing on walls/ ceiling/ floor 32mm dia. CPVC pipe with necessary fittings, remaking good the demolished portion etc. complete. Including removing existing pipe line if necessary and conveying and stacking the same in PWD chowky or as directed etc. complete. A)Ground Floor-Rate as per SSR 2022-2023			584.00	
	Total			584.00	lit
25	Providing and fixing on walls/ ceiling/ floor 25 mm dia. CPVC pipe with necessary fittings, remaking good the demolished portion etc. complete. Including removing existing pipe line if necessary and conveying and stacking the same in PWD chowky or as directed etc. complete. A)Ground Floor-Rate as per SSR 2022-2023			262.00	
	Total			262.00	lit


K.V. AMRUTWAD
 B.E. (Civil)
 CONSULTING ENGINEER
 R.No.TP/NWCMC/ENGG/44

267

268

LEAD CHART

Sr. No.	Material	Source	Total lead in km	Initial lead	Net lead	Net charges	
1	Sand		20	422.39	422.39	0	
2	c.r.metal		25	489.23	489.23	0	
3	40 mm above metal		25	468.85	468.85	0	
4	Murum	Local	5	280.93	280.93	0	
5	Brick		25	1183.4	1183.4	0.00	
6	Cement	LOCAL	5	220.06	220.06	0	0.00
7	Steel	LOCAL	10	211.04	211.04	0	
8	Flooring (Tiles)	LOCAL	0	0	0	0	
9	Flooring (Tandur, Granite)	LOCAL	0	0	0	0	

certified that the lead of the quarries accounted in the estimate as per the nearest route is considered. Lead of the quarry account in the estimate are authentic leads which is to be government approved.



K.V. AMRUTWAD
B.E. (Civil)
CONSULTING ENGINEER
R.No.TP/NWCMC/ENGG/44

269

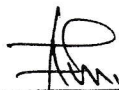
Name of Work : RAJE MALHAR HOLKAR AGRO PRODUCER COMPANY LTD BERLI TQ.MUKHED Estimate prepared for Construction of Shed For Daal Mill Plant At- BERLI BK GUT.NO 137 TQ.MUKHED Dist.Nanded

QUARRY CHART

	100 KM
	90 KM
	80 KM
	70 KM
	60 KM
	50 KM
	40 KM
	30 KM
	25 KM
	20 KM
	15 KM
	10 KM

CERTIFICATE

Certificated that I have visited the quarry sites & distance shown as lead is corrects & sufficient quantity will be available from quarry.




K.V. AMRUTWAD
B.E. (Civil)
CONSULTING ENGINEER
R.No.TP/NWCMC/ENGG

272

CERTIFICATE

This is certified that:-

- 1 100% Arithmetical check has been exercised while framing the estimate.
The rates as adopted in the estimate are as per current. Schedule of Rates (S.S.R. 2022-23)
- 2 The Quarries of the construction materials are mentioned in the lead chart have been inspected by me. The lead of materials as mentioned in the lead chart are minimum and correct. There is no other quarry available with lead less than that mentioned in the lead chart. The materials available from quarry are good in Quality and quantity required for construction work
- 3 The lead charges of the construction materials have already been incorporate in the rates of the respective items.
- 4 The quantity of the item as worked out in estimate are based on the detail working drawing/ designs are as per site conditions. The quality of the executed item will not exceed the quantity as worked out in the estimate
- 5 The various provisions made in the estimate are technically adequate and the entire proposal is considered to be technically sound.
- 6 The layout plan and the working drawing of the proposed construction have been prepared as per bye-laws of local authority


K.V. AMRUTWAD
B.E. (Civil)
CONSULTING ENGINEER
R.No.TP/NWCMC/ENGG/44

SPECIFICATION

S. STRUCTURE R.C.C.FRAMED
 TRUSS B.B.MASONRY
 PLASTERING M.S.TRUSS
 12MMTHICK1.5 PROP

AREA STATEMENT

AREA OF SHED - 185.87 SQ.M.

DESCRIPTION OF PROPOSAL

PROPOSED PLAN FOR:-Construction of Shed For
 Daal Mill Plant G.NO.137 AT-BERLI BK
 TQ.MUKHED ,Dist.Nanded

SCALE - 1:100 SQ.M.

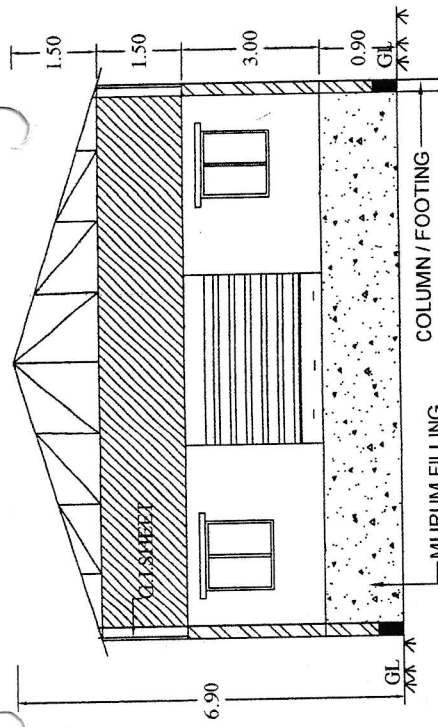
K.V. AMRUTWAD
 B.E. (Civil)
 CONSULTING ENGINEER
 R.No.TPINWCM/ENGG/11

SIGN. OF OWNER

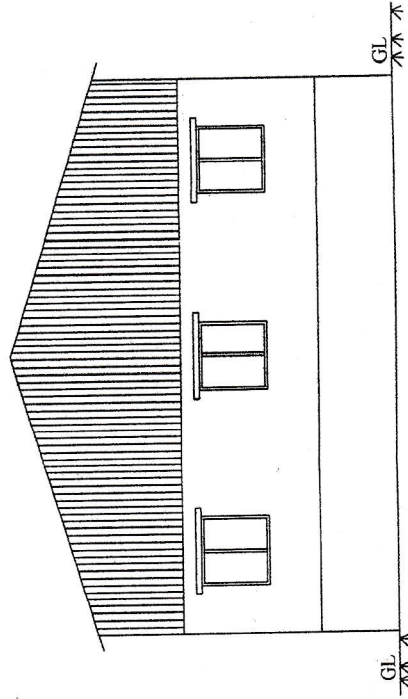
" OM ASSOCIATES "

RAJALENCLAVE, WAMAN NAGAR,
 PURNA ROAD, NANDED.
 MOBILE NO. 9423140573

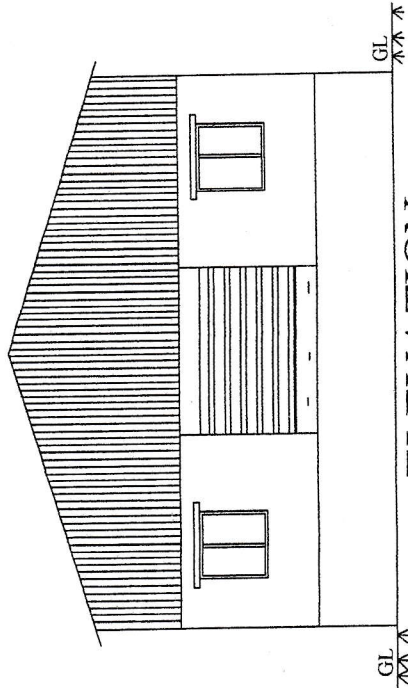
2/3



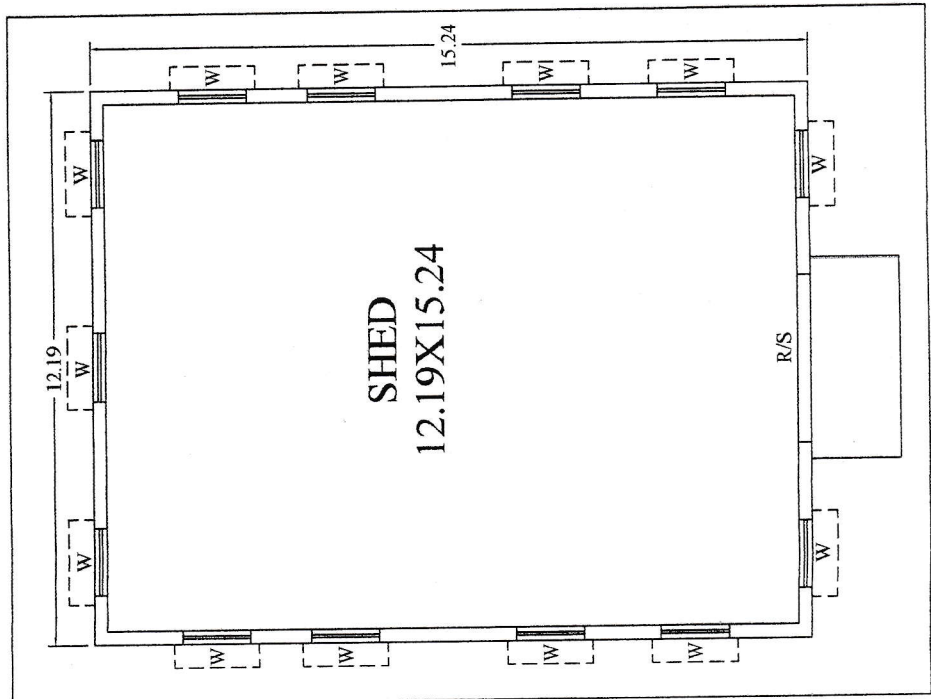
SECTION A'A



RARE ELEVATION



ELEVATION



**SHED
 12.19X15.24**

GROUND F. PLAN (1:100)